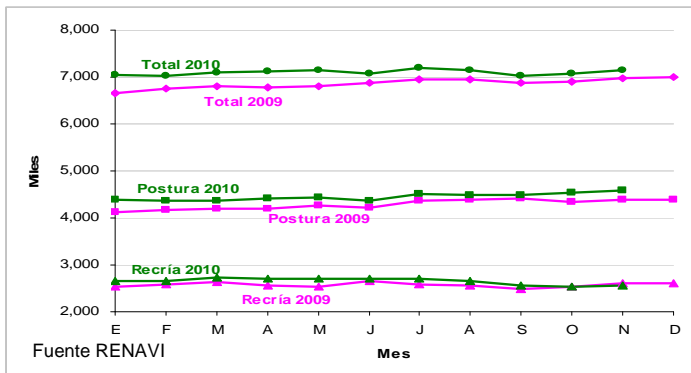
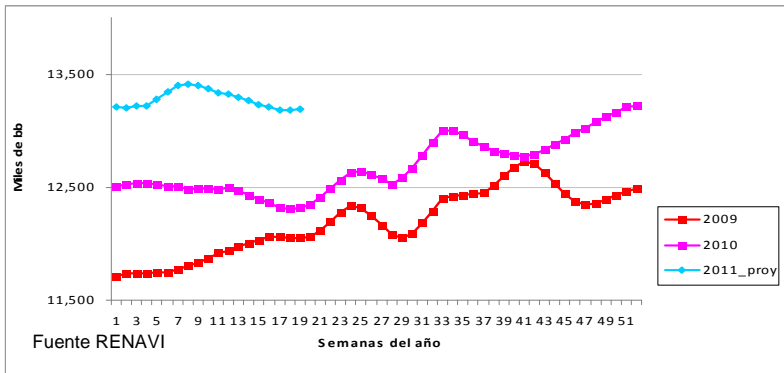


EXISTENCIAS DE REPRODUCTORAS PESADAS 2009 - 2010



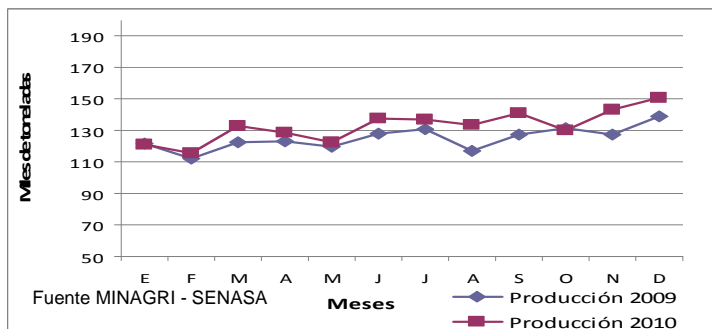
MES	RECRÍA			POSTURA			TOTAL		
	2009	2010	% 10/09	2009	2010	% 10/09	2009	2010	% 10/09
E	2,532	2,658	5.0	4,119	4,400	6.8	6,651	7,058	6.1
F	2,575	2,660	3.3	4,176	4,362	4.5	6,751	7,022	4.0
M	2,623	2,731	4.1	4,186	4,367	4.3	6,809	7,098	4.2
A	2,569	2,714	5.6	4,207	4,410	4.8	6,776	7,124	5.1
M	2,541	2,716	6.9	4,276	4,428	3.6	6,817	7,144	4.8
J	2,653	2,702	1.8	4,230	4,378	3.5	6,883	7,080	2.9
J	2,586	2,703	4.5	4,358	4,502	3.3	6,944	7,205	3.8
A	2,558	2,657	3.9	4,390	4,498	2.5	6,948	7,155	3.0
S	2,481	2,554	2.9	4,407	4,477	1.6	6,888	7,031	2.1
O	2,548	2,531	-0.7	4,347	4,539	4.4	6,895	7,071	2.6
N	2,600	2,561	-1.5	4,382	4,583	4.6	6,982	7,144	2.3
D	2,598			4,391			6,989		

PRODUCCION DE POLLITOS BB PARRILLEROS 2009 - 2010 - 2011



MES	BB				
	2009	2010	2011	% 10/09	% 11/10
E	11,733	12,526	13,224	6.8	5.6
F	11,790	12,496	13,388	6.0	7.1
M	11,925	12,482	13,335	4.7	6.8
A	12,039	12,377	13,223	2.8	6.8
M	12,096	12,377		2.3	
J	12,296	12,612		2.6	
J	12,097	12,588		4.1	
A	12,323	12,923		4.9	
S	12,488	12,869		3.1	
O	12,687	12,795		0.9	
N	12,424	12,949		4.2	
D	12,425	13,158		5.9	

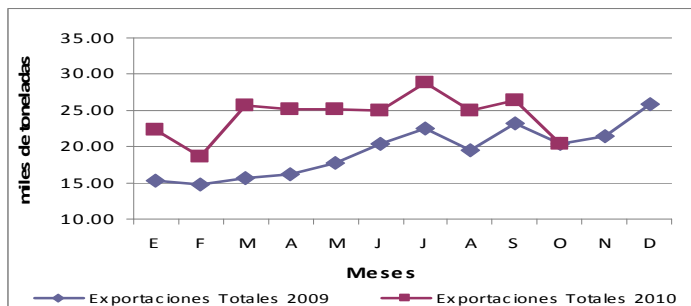
PRODUCCIÓN DE CARNE AVIAR



FAENA DE AVES

Año	2009	2010	Dif. 2010/09
Mes	Miles de cab		%
E	45,582	47,871	5
F	42,845	46,641	9
M	46,899	52,656	12
A	46,302	50,175	8
M	44,828	47,198	5
J	48,593	51,940	7
J	49,718	52,049	5
A	45,557	51,330	13
S	48,963	53,573	9
O	49,603	49,696	0
N	49,537	54,540	10
D	54,899	57,371	5
Subt- Ene-Dic	573,326	615,040	7
Total	573,326	615,040	

EXPORTACIONES / IMPORTACIONES DE CARNE AVIAR Y SUBPRODUCTOS



Fuente MINAGRI - SENASA